

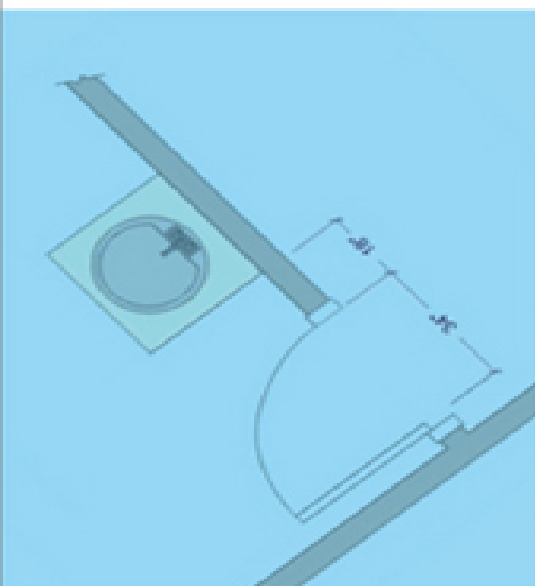
Second Edition

NKBA National Kitchen
& Bath Association

KITCHEN & BATHROOM

**Planning
Guidelines
with Access
Standards**

Based on the 2015 International Residential Code® (IRC®) and the ICC A117.1-2009 Standards



Kitchen & Bathroom Planning Guidelines with Access Standards



WILEY

This book is printed on acid-free paper. ©

National Kitchen & Bath Association
687 Willow Grove Street
Hackettstown, NJ 07840
Phone: 800-THE-NKBA (800-843-6522)
Fax: 908-852-1695
Website: NKBA.org

Copyright © 2016 National Kitchen & Bath Association. All rights reserved.

Published by John Wiley & Sons, Inc., Hoboken, New Jersey.

Published simultaneously in Canada.

No part of this publication may be reproduced, stored in a retrieval system, or transmitted in any form or by any means, electronic, mechanical, photocopying, recording, scanning, or otherwise, except as permitted under Section 107 or 108 of the 1976 United States Copyright Act, without either the prior written permission of the Publisher, or authorization through payment of the appropriate per-copy fee to the Copyright Clearance Center, Inc., 222 Rosewood Drive, Danvers, MA 01923, (978) 750-8400, fax (978) 646-8600, or on the web at www.copyright.com. Requests to the Publisher for permission should be addressed to the Permissions Department, John Wiley & Sons, Inc., 111 River Street, Hoboken, NJ 07030, (201) 748-6011, fax (201) 748-6008.

Limit of Liability/Disclaimer of Warranty: While the publisher and author have used their best efforts in preparing this book, they make no representations or warranties with respect to the accuracy or completeness of the contents of this book and specifically disclaim any implied warranties of merchantability or fitness for a particular purpose. No warranty may be created or extended by sales representatives or written sales materials. The advice and strategies contained herein may not be suitable for your situation. You should consult with a professional where appropriate. Neither the publisher nor author shall be liable for any loss of profit or any other commercial damages, including but not limited to special, incidental, consequential, or other damages.

This publication is designed to provide accurate and authoritative information in regard to the subject matter covered. It is sold with the understanding that the publisher is not engaged in rendering professional services. If legal, accounting, medical, psychological or any other expert assistance is required, the services of a competent professional person should be sought.

Designations used by companies to distinguish their products are often claimed as trademarks. In all instances where John Wiley & Sons, Inc. is aware of a claim, the product names appear in initial capital or all capital letters. Readers, however, should contact the appropriate companies for more complete information regarding trademarks and registration.

For general information on our other products and services please contact our Customer Care Department within the United States at (800) 762-2974, outside the United States at (317) 572-3993 or fax (317) 572-4002.

Wiley publishes in a variety of print and electronic formats and by print-on-demand. Some material included with standard print versions of this book may not be included in e-books or in print-on-demand. If this book refers to media such as a CD or DVD that is not included in the version you purchased, you may download this material at <http://booksupport.wiley.com>. For more information about Wiley products, visit www.wiley.com.

Cover: Kitchen photo (top left): Design by Amy Yin. Codesigners: Emily O'Keefe, CKD, CBD; Chris Papaleo, AIA, LEED AP, NCARB

Photo © Joy Yagid

Bathroom photo (bottom right): Design by Erica Westeroth, CKD, CAPS, ARIDO. Codesigner: Sheena Hammond

Photo © Arnal Photography

Cover illustrations: NKBA Kitchen and Bathroom Planning Guidelines © Trish Koslowsky

Library of Congress Cataloging-in-Publication Data:

Names: National Kitchen and Bath Association (U.S.)

Title: Kitchen & bathroom planning guidelines with access standards / National Kitchen & Bath Association.

Other titles: Kitchen and bathroom planning guidelines with access standards | NKBA kitchen & bathroom planning guidelines with access standards

Description: Second edition. | Hoboken, New Jersey : Wiley, 2016.

Identifiers: LCCN 2015037523 (print) | LCCN 2015042191 (ebook) | ISBN 9781119216001 (spiral bound) | ISBN 9781119216568 (ePub) | ISBN 9781119216575 (Adobe PDF)

Subjects: LCSH: Kitchens—Design and construction. | Bathrooms--Design and construction. | Kitchens—Designs and plans. | Bathrooms--Designs and plans. | Kitchens—Standards. | Bathrooms—Standards. | BISAC: ARCHITECTURE / Interior Design / General.

Classification: LCC TH3000.K58 K585 2016 (print) | LCC TH3000.K58 (ebook) | DDC 690/.42—dc23

LC record available at <http://lcn.loc.gov/2015037523>

THE NKBA

The National Kitchen & Bath Association (NKBA) is a leading nonprofit trade association dedicated to the advancement of the kitchen and bath industry. Since its inception more than 50 years ago, the NKBA has maintained its leadership status of excellence and professionalism by providing education, certification, and the tools needed for success in the industry. NKBA Professional Development and Certification are the gold standard in the kitchen and bath industry. The NKBA offers professional development courses and levels of certification for all stages of an individual's career. The NKBA also offers networking opportunities and professional development training at over 70 chapters across North America. The NKBA is proud owner of the Kitchen & Bath Industry Show (KBIS).

NKBA LEARNING & DEVELOPMENT

NKBA Learning & Development provides kitchen and bath professionals with convenient educational courses to enhance their careers. The NKBA offers professional development opportunities through in-person courses, virtual instructor-led training, eLearning, seminars, and conferences. The NKBA courses are aligned to specific learning paths in eight key competency areas, providing an individualized approach to professional development. Industry professionals can easily determine which courses are appropriate for their career growth by viewing the course descriptions on [NKBA.org](https://www.nkba.org). The NKBA also has approximately 55 Accredited and Supported Programs in

colleges and universities across North America that specialize in kitchen and bath design.

NKBA CERTIFICATION

NKBA Certification is based on in-depth testing, education, and industry experience, allowing consumers to know that their designer's professional skills have been independently evaluated and tested. NKBA certified professional members are committed to improving those skills by meeting continuing education and professional development requirements.

There are three levels of NKBA Certification: Associate Kitchen & Bath Designer (AKBD[®]), Certified Kitchen Designer (CKD[®]) or Certified Bath Designer (CBD[®]), and Certified Master Kitchen & Bath Designer (CMKBD[®]).

CONTENTS

[Methodology/Overview](#)

[Kitchen Planning Guidelines with Access Standards](#)

[Kitchen Planning Guideline 1](#)

[Kitchen Planning Guideline 2](#)

[Kitchen Planning Guideline 3](#)

[Kitchen Planning Guideline 4](#)

[Kitchen Planning Guideline 5](#)

[Kitchen Planning Guideline 6](#)

[Kitchen Planning Guideline 7](#)

[Kitchen Planning Guideline 8](#)

[Kitchen Planning Guideline 9](#)

[Kitchen Planning Guideline 10](#)

[Kitchen Planning Guideline 11](#)

[Kitchen Planning Guideline 12](#)

[Kitchen Planning Guideline 13](#)

[Kitchen Planning Guideline 14](#)

[Kitchen Planning Guideline 15](#)

[Kitchen Planning Guideline 16](#)

[Kitchen Planning Guideline 17](#)

[Kitchen Planning Guideline 18](#)

[Kitchen Planning Guideline 19](#)

[Kitchen Planning Guideline 20](#)

[Kitchen Planning Guideline 21](#)

[Kitchen Planning Guideline 22](#)

[Kitchen Planning Guideline 23](#)

[Kitchen Planning Guideline 24](#)

[Kitchen Planning Guideline 25](#)

[Kitchen Planning Guideline 26](#)

[Kitchen Planning Guideline 27](#)

[Kitchen Planning Guideline 28](#)

[Kitchen Planning Guideline 29](#)

[Kitchen Planning Guideline 30](#)

[Kitchen Planning Guideline 31](#)

[Notes](#)

[Bathroom Planning Guidelines with Access Standards](#)

[Bathroom Planning Guideline 1](#)

[Bathroom Planning Guideline 2](#)

[Bathroom Planning Guideline 3](#)

[Bathroom Planning Guideline 4](#)

[Bathroom Planning Guideline 5](#)

[Bathroom Planning Guideline 6](#)

[Bathroom Planning Guideline 7](#)

[Bathroom Planning Guideline 8](#)

[Bathroom Planning Guideline 9](#)

[Bathroom Planning Guideline 10](#)

[Bathroom Planning Guideline 11](#)

[Bathroom Planning Guideline 12](#)

[Bathroom Planning Guideline 13](#)

[Bathroom Planning Guideline 14](#)

[Bathroom Planning Guideline 15](#)

[Bathroom Planning Guideline 16](#)

[Bathroom Planning Guideline 17](#)

[Bathroom Planning Guideline 18](#)

[Bathroom Planning Guideline 19](#)

[Bathroom Planning Guideline 20](#)

[Bathroom Planning Guideline 21](#)

[Bathroom Planning Guideline 22](#)

[Bathroom Planning Guideline 23](#)

[Bathroom Planning Guideline 24](#)

[Bathroom Planning Guideline 25](#)

[Bathroom Planning Guideline 26](#)

[Bathroom Planning Guideline 27](#)

[Notes](#)

[Measurement Conversions](#)

[The NKBA Professional Resource Library](#)

[EULA](#)

List of Tables

[Chapter 1](#)

[**Shelf/Drawer Frontage in Inches**](#)

[**Shelf/Drawer Frontage in Millimeters**](#)

Methodology/Overview

The *NKBA Kitchen & Bathroom Planning Guidelines with Access Standards* is a collection of illustrations and planning suggestions to aid professionals in the safe and effective planning of kitchens and bathrooms. These guidelines are also included in NKBA Professional Resource Library *Kitchen Planning* and *Bath Planning* volumes. Designers and those interested in becoming kitchen and bath design professionals benefit by studying the complete body of knowledge found in the NKBA Professional Resource Library.

These easy-to-understand guidelines were developed under the guidance of the NKBA by a committee of professionals. The guidelines published in this booklet reflect a composite of the historical review, current industry environment, future trends, consumer lifestyles, new research, new building codes, and current industry practices.

The purpose of the guidelines is to serve as the basis for:

- Ensuring building code compliance.
- Recognizing the importance of consumer health, safety, and welfare in kitchen and bathroom design.
- Supporting sound kitchen and bath design practices.
- Testing core kitchen and bath competencies.
- Training designers in academic and educational programs.

Kitchen Planning Guidelines with Access Standards

The National Kitchen & Bath Association developed the *Kitchen Planning Guidelines with Access Standards* to provide designers with good planning practices that consider the needs of a range of users.

The code references for the Kitchen Planning Guidelines are based on the analysis of the 2015 International Residential Code® (IRC®) and the International Plumbing Code®.

The code references for the Access Standards are based on ICC A117.1-2009 Accessible and Usable Buildings and Facilities.

Be sure to check local, state, and national laws that apply to your design and follow those legal requirements.

Updates made to the Guidelines in this edition are easily identified by boldface text.

Drawings for the kitchen planning guidelines were contributed by Chief Architect and created using Chief Architect software (www.chiefarchitect.com).

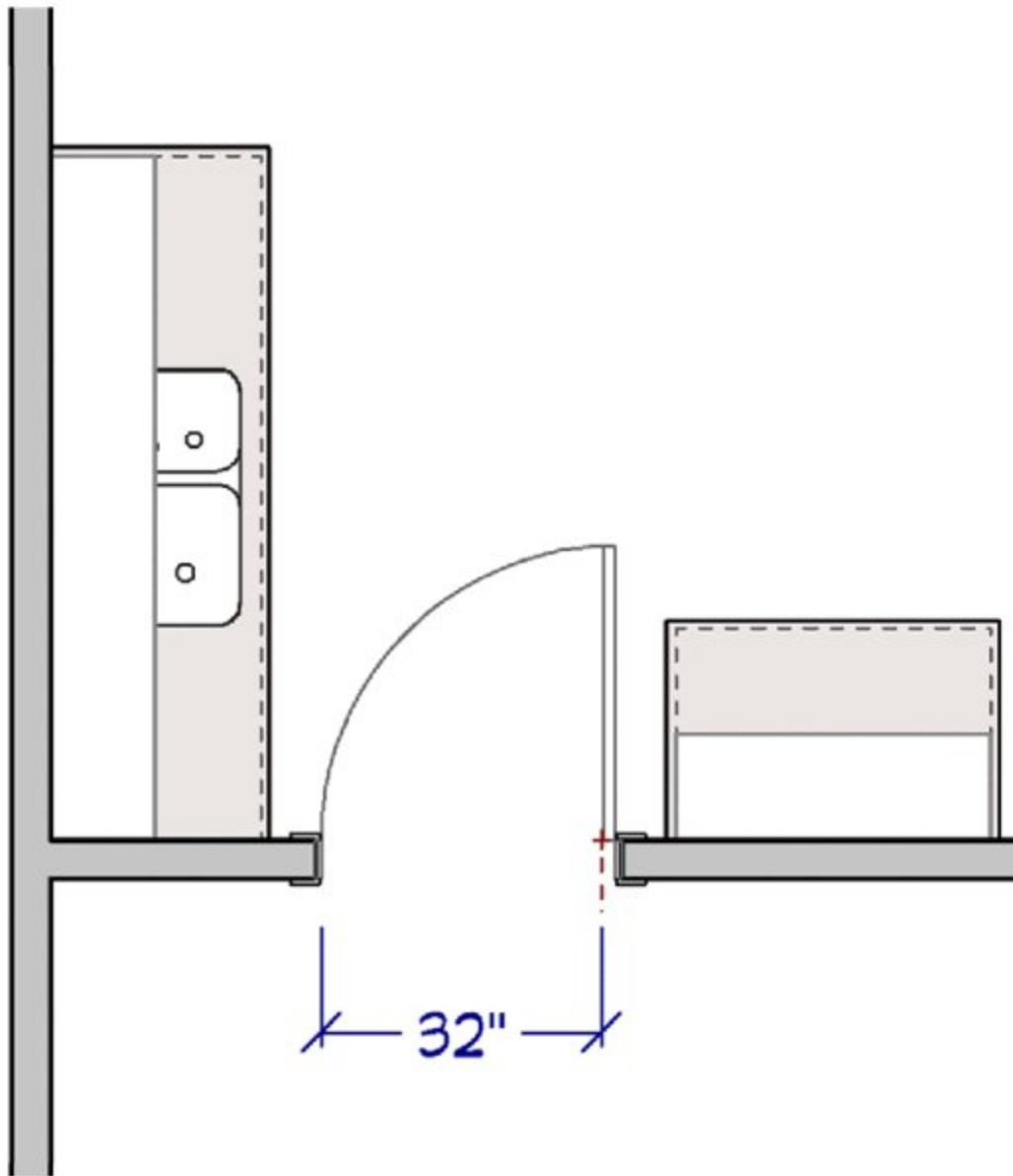
KITCHEN PLANNING GUIDELINE 1

Door/Entry

Recommended:

The clear opening of a doorway should be at least 32" (813 mm) wide. This would require a minimum 2'10" (864 mm)

door.



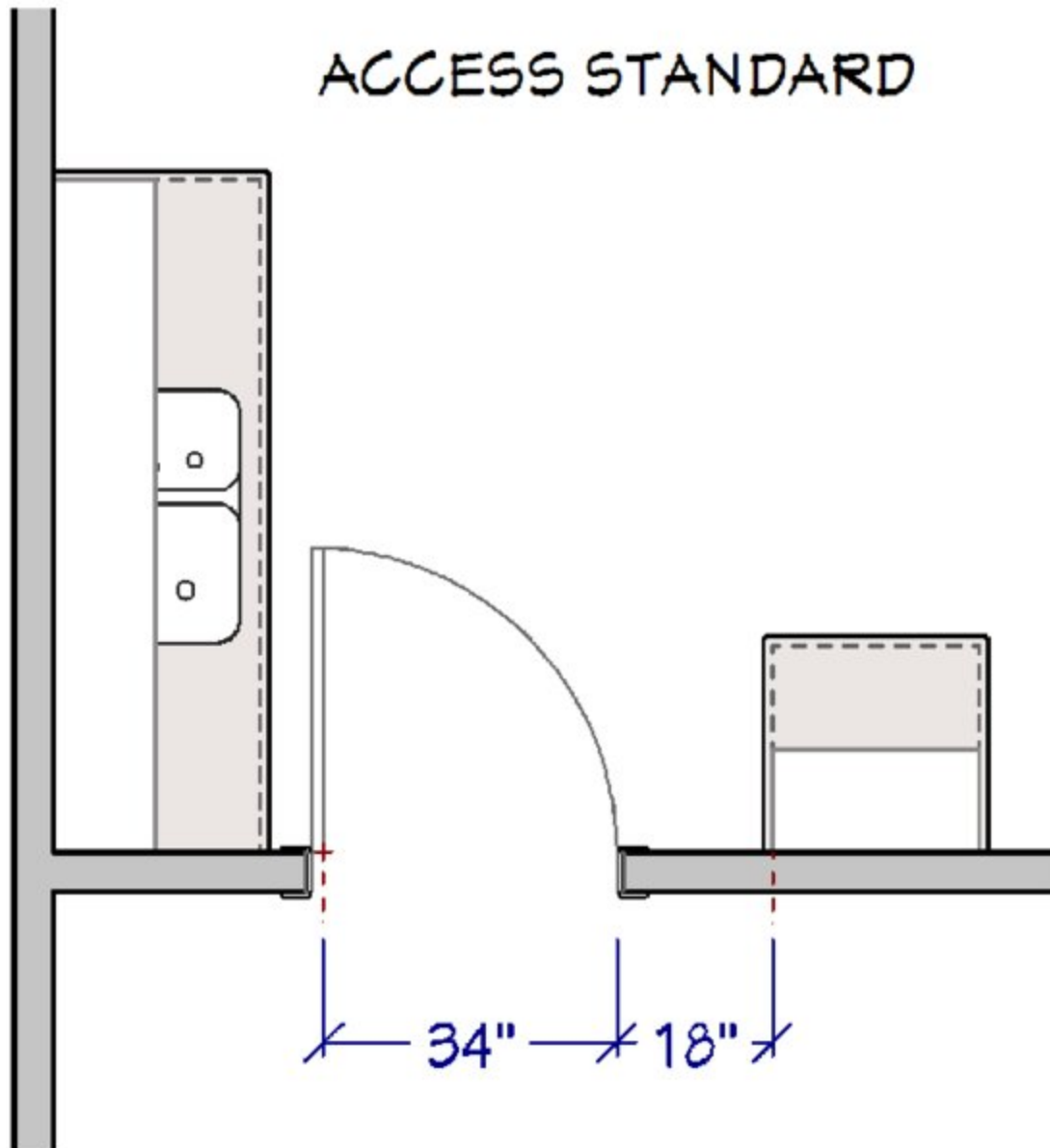
Code Requirement:

State or local codes may apply.

Access Standard

Recommended:

The clear opening of a doorway should be at least 34" (864 mm). This would require a minimum 3'0" (914 mm) door.



ICC A117.1-2009 Reference:

- Clear openings of doorways with swinging doors shall be measured between the face of door and stop, with the door open 90 degrees. (404.2.2)
- When a passage exceeds 24" (610 mm) in depth, the minimum clearance increases to 36" (914 mm). (404.2.2)

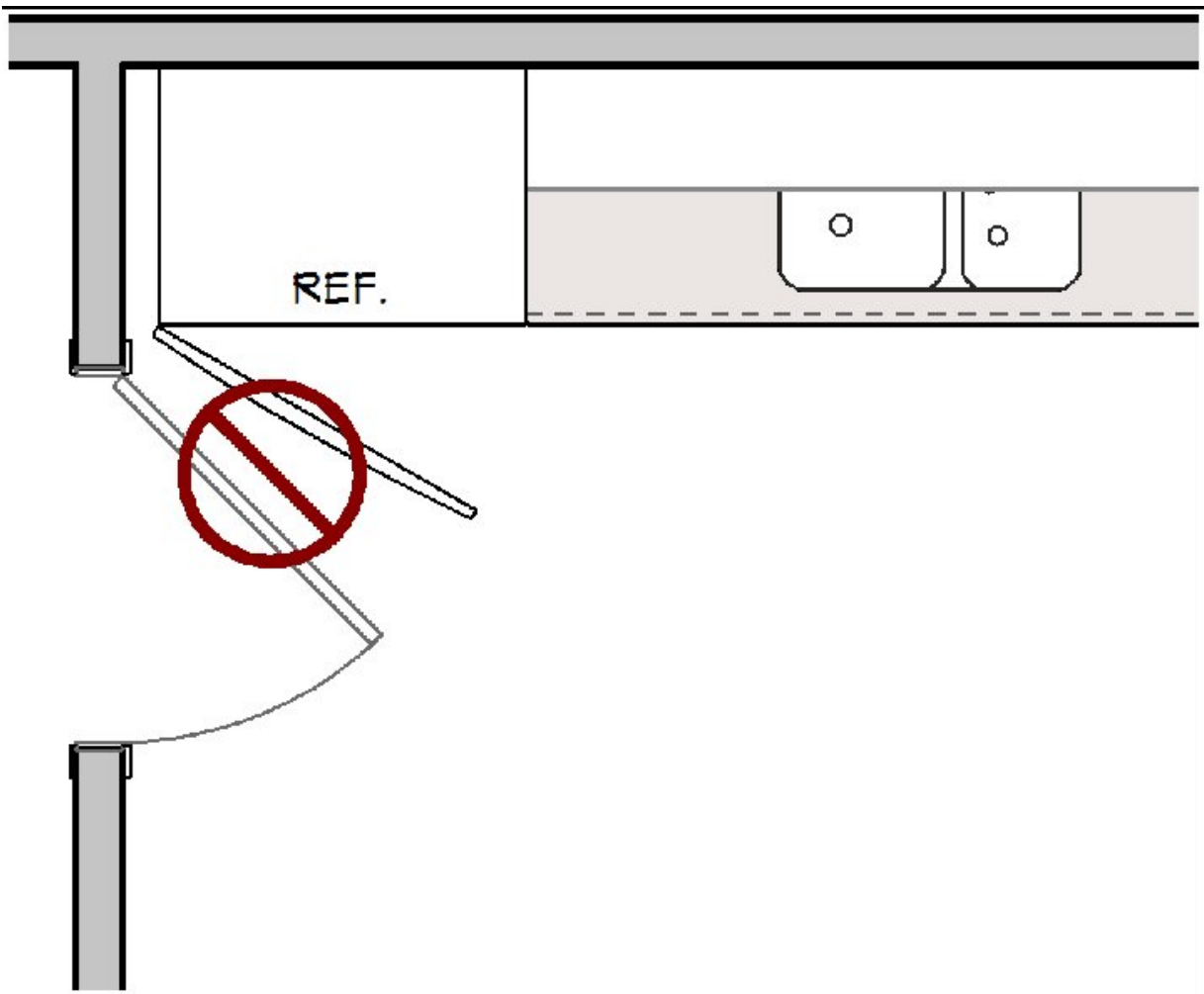
Diagram illustrating a door swing. The door is shown in an open position, swinging outwards. The height of the door is labeled as 36". The width of the door is labeled as 24", with the text "EXCEEDS" above it, indicating it is wider than the standard 20" requirement. A red arrow labeled "TRAVEL" indicates the distance the door swings open.

Door Interference

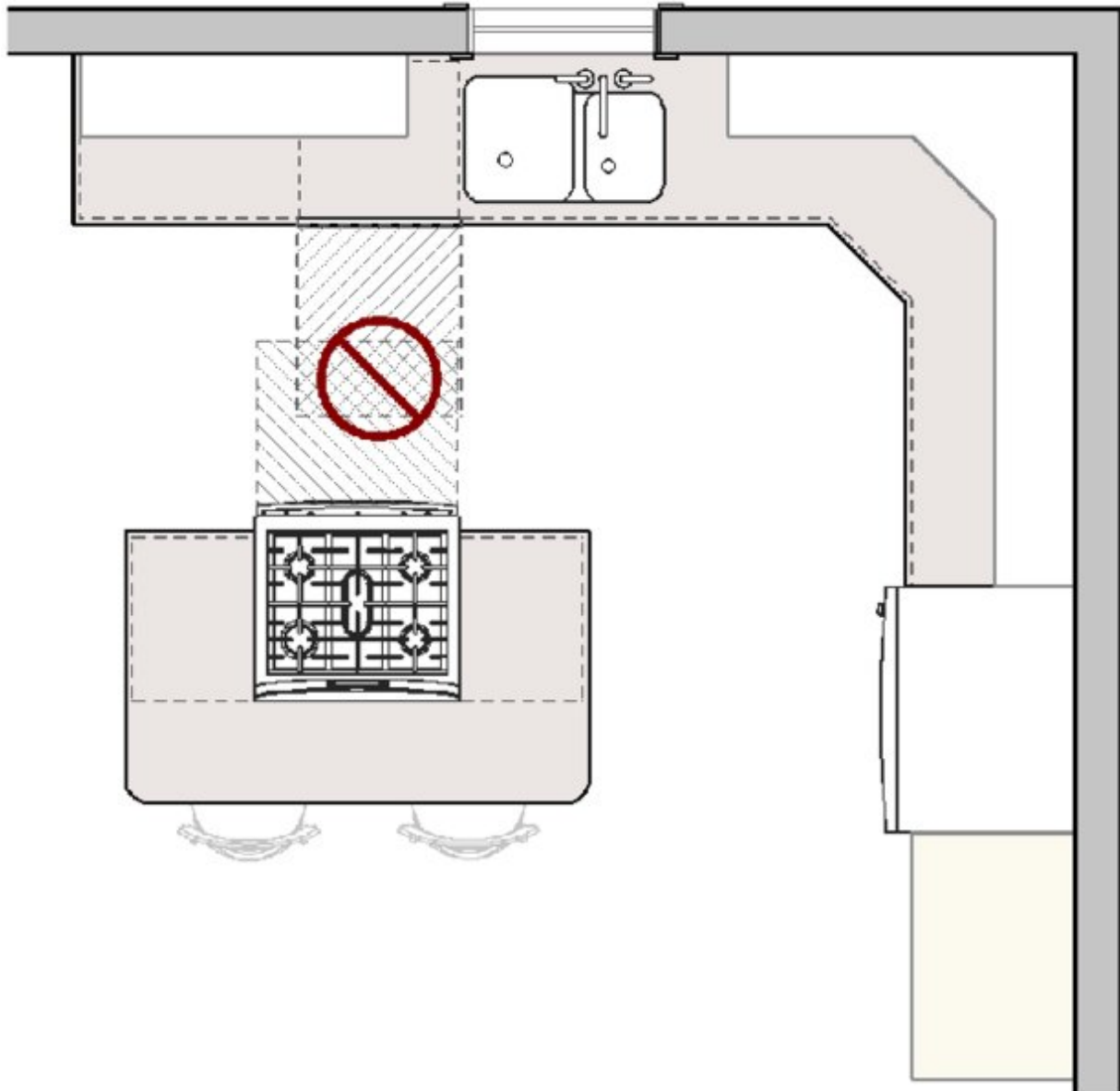
No entry door should interfere with the safe operation of appliances, nor should appliance doors interfere with one another.

Code Requirement:

State or local codes may apply.

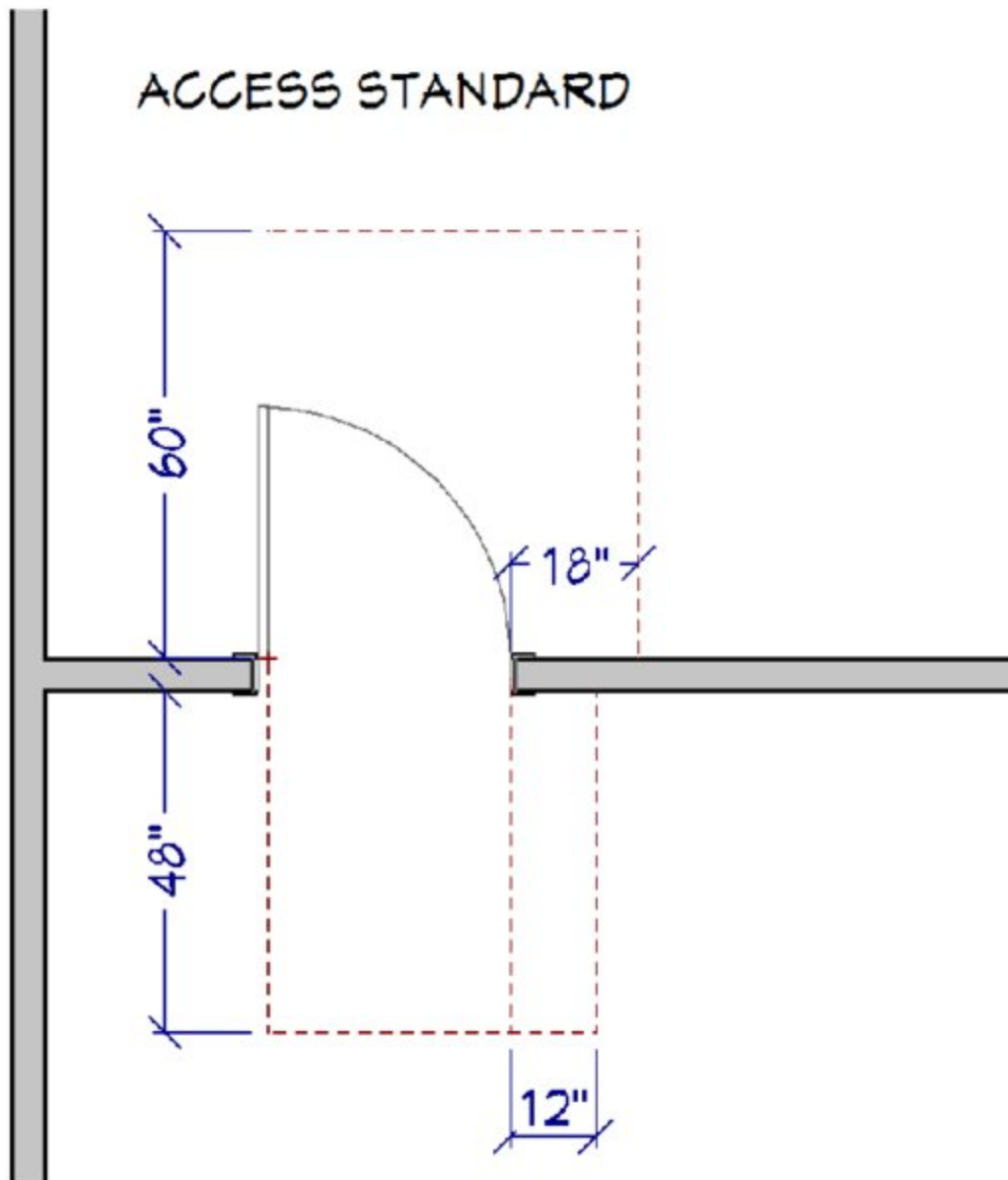
**Access Standard****Recommended:**

In addition, the door area should include clear floor space for maneuvering, which varies according to the type of door and direction of approach.



ICC A117.1-2009 Reference:

- For a standard hinged door, the minimum clearance on the pull side of the door should be the door width plus 18" × 60" (457 mm × 1524 mm). (404.2.3)
- The minimum clearance on the push side of the door should be the width of the door plus 12" × 48" (305 mm × 1219 mm). (404.2.3)

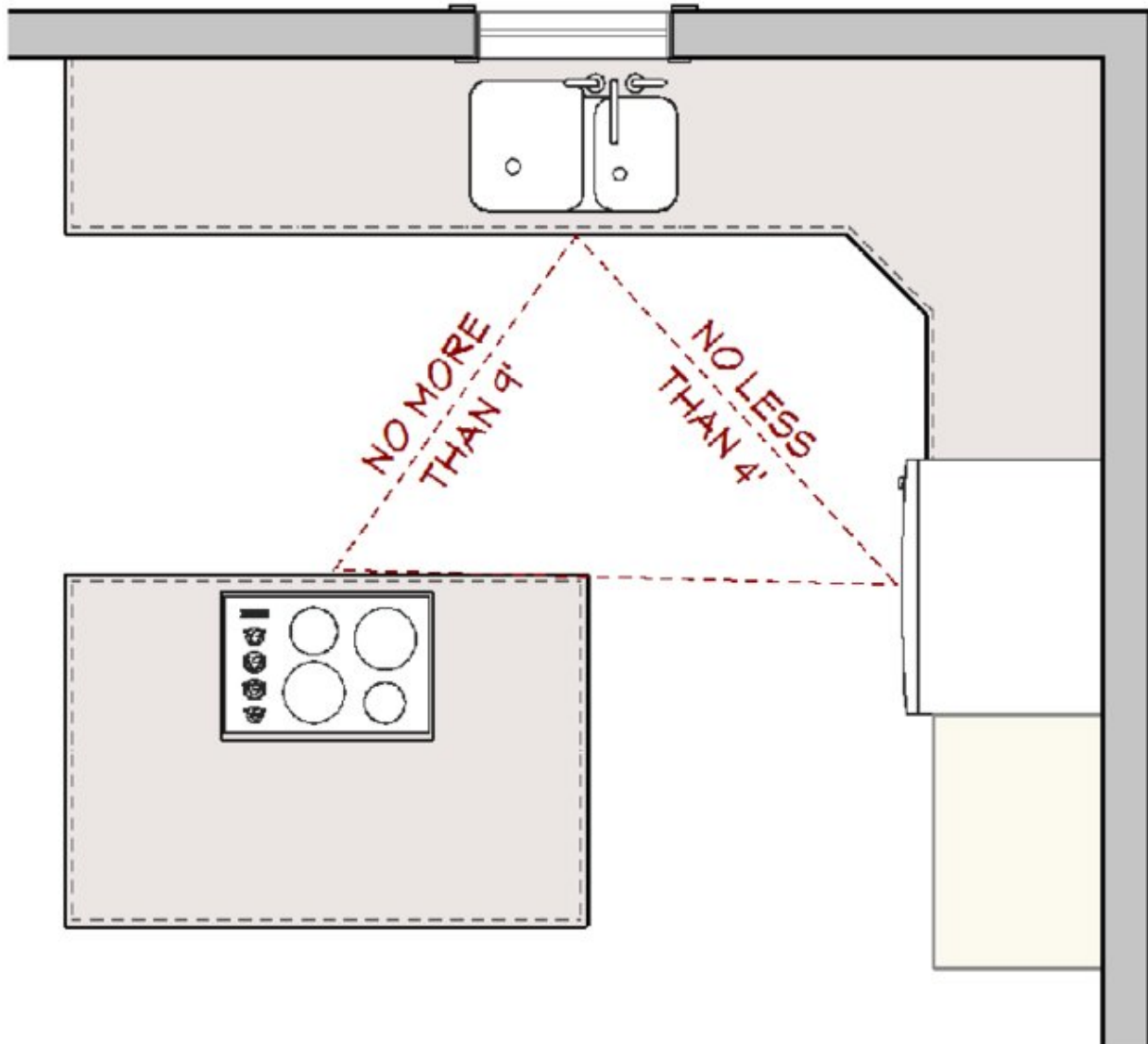


KITCHEN PLANNING GUIDELINE 3

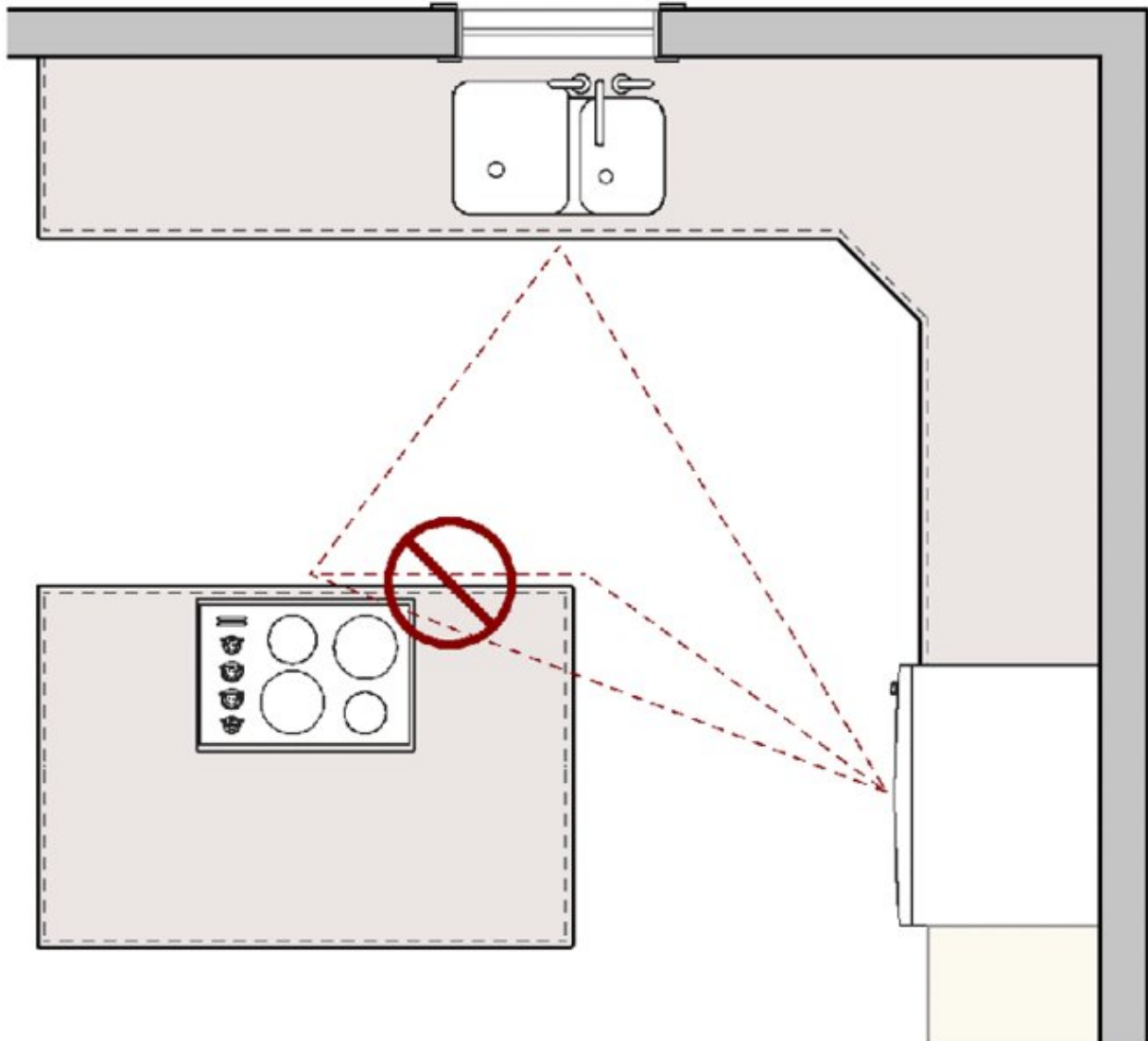
Distance between Work Centers

Recommended:

In a kitchen with three work centers,¹ the sum of the three traveled distances should total no more than 26' (7.9 m), with no single leg of the triangle measuring less than 4' (1.2 m) or more than 9' (2.7 m).



When the kitchen plan includes more than three primary appliance/work centers, each additional travel distance to another appliance/work center should measure no less than 4' (1.2 m) nor more than 9' (2.7 m).



Each leg is measured from the center-front of the appliance/sink.

No work triangle leg intersects an island/peninsula or other obstacle by more than 12" (305 mm).

Code Requirement:

State or local codes may apply.

Access Standard

Recommended: