

LEARNING MADE EASY



In Full Color

Canon® EOS® 80D

for
dummies®
A Wiley Brand



Learn your camera's
features and controls

Build the confidence to apply
pro techniques when you shoot

Take better portraits
and action shots

Julie Adair King
Robert Correll



Canon[®] EOS[®] 80D

for
dummies[®]
A Wiley Brand

by Julie Adair King and Robert Correll

for
dummies[®]
A Wiley Brand

Canon® EOS® 80D For Dummies®

Published by: **John Wiley & Sons, Inc.**, 111 River Street, Hoboken, NJ 07030-5774, www.wiley.com

Copyright © 2016 by John Wiley & Sons, Inc., Hoboken, New Jersey

Published simultaneously in Canada

No part of this publication may be reproduced, stored in a retrieval system or transmitted in any form or by any means, electronic, mechanical, photocopying, recording, scanning or otherwise, except as permitted under Sections 107 or 108 of the 1976 United States Copyright Act, without the prior written permission of the Publisher. Requests to the Publisher for permission should be addressed to the Permissions Department, John Wiley & Sons, Inc., 111 River Street, Hoboken, NJ 07030, (201) 748-6011, fax (201) 748-6008, or online at <http://www.wiley.com/go/permissions>.

Trademarks: Wiley, For Dummies, the Dummies Man logo, Dummies.com, Making Everything Easier, and related trade dress are trademarks or registered trademarks of John Wiley & Sons, Inc. and may not be used without written permission. Canon and EOS are registered trademarks of Canon, Inc. All other trademarks are the property of their respective owners. John Wiley & Sons, Inc. is not associated with any product or vendor mentioned in this book.

LIMIT OF LIABILITY/DISCLAIMER OF WARRANTY: THE PUBLISHER AND THE AUTHOR MAKE NO REPRESENTATIONS OR WARRANTIES WITH RESPECT TO THE ACCURACY OR COMPLETENESS OF THE CONTENTS OF THIS WORK AND SPECIFICALLY DISCLAIM ALL WARRANTIES, INCLUDING WITHOUT LIMITATION WARRANTIES OF FITNESS FOR A PARTICULAR PURPOSE. NO WARRANTY MAY BE CREATED OR EXTENDED BY SALES OR PROMOTIONAL MATERIALS. THE ADVICE AND STRATEGIES CONTAINED HEREIN MAY NOT BE SUITABLE FOR EVERY SITUATION. THIS WORK IS SOLD WITH THE UNDERSTANDING THAT THE PUBLISHER IS NOT ENGAGED IN RENDERING LEGAL, ACCOUNTING, OR OTHER PROFESSIONAL SERVICES. IF PROFESSIONAL ASSISTANCE IS REQUIRED, THE SERVICES OF A COMPETENT PROFESSIONAL PERSON SHOULD BE SOUGHT. NEITHER THE PUBLISHER NOR THE AUTHOR SHALL BE LIABLE FOR DAMAGES ARISING HEREFROM. THE FACT THAT AN ORGANIZATION OR WEBSITE IS REFERRED TO IN THIS WORK AS A CITATION AND/OR A POTENTIAL SOURCE OF FURTHER INFORMATION DOES NOT MEAN THAT THE AUTHOR OR THE PUBLISHER ENDORSES THE INFORMATION THE ORGANIZATION OR WEBSITE MAY PROVIDE OR RECOMMENDATIONS IT MAY MAKE. FURTHER, READERS SHOULD BE AWARE THAT INTERNET WEBSITES LISTED IN THIS WORK MAY HAVE CHANGED OR DISAPPEARED BETWEEN WHEN THIS WORK WAS WRITTEN AND WHEN IT IS READ.

For general information on our other products and services, please contact our Customer Care Department within the U.S. at 877-762-2974, outside the U.S. at 317-572-3993, or fax 317-572-4002. For technical support, please visit <https://hub.wiley.com/community/support/dummies>.

Wiley publishes in a variety of print and electronic formats and by print-on-demand. Some material included with standard print versions of this book may not be included in e-books or in print-on-demand. If this book refers to media such as a CD or DVD that is not included in the version you purchased, you may download this material at <http://booksupport.wiley.com>. For more information about Wiley products, visit www.wiley.com.

Library of Congress Control Number: 2016943279

ISBN 978-1-119-29136-7 (pbk); ISBN 978-1-119-29138-1 (ebk); ISBN 978-1-119-29137-4 (ebk)

Manufactured in the United States of America

10 9 8 7 6 5 4 3 2 1

Table of Contents

INTRODUCTION	1
A Quick Look at What's Ahead	2
Icons and Other Stuff to Note	3
eCheat Sheet	3
Practice, Be Patient, and Have Fun!	4
PART 1: FAST TRACK TO SUPER SNAPS	5
CHAPTER 1: Getting the Lay of the Land	7
Looking at Lenses	7
Choosing a lens	8
Attaching and removing a lens	11
Zooming in and out	12
Using an IS (image stabilizer) lens	13
Getting acquainted with focusing	14
Adjusting the Viewfinder	15
Adjusting the Monitor Position	16
Using the Touchscreen	17
Working with Memory Cards	20
Exploring External Camera Features	22
Topside controls	22
Back-of-the-body controls	24
Front odds and ends	27
Connection ports	29
Ordering from Camera Menus	30
Navigating the Custom Functions Menu	32
Monitoring Critical Camera Settings	34
The Info button: Choosing what the screen shows	35
Checking the Camera Settings display	36
Viewing the Shooting Settings display	37
Decoding viewfinder data	38
Reading the LCD panel	40
Changing Settings via the Quick Control Screen	41
Getting Help from Your Camera	43
Reviewing Basic Setup Options	43
Cruising the Setup menus	43
Setting up the Lock switch	49
Taking two final setup steps	50

CHAPTER 2:	Choosing Basic Picture Settings	51
	Choosing an Exposure Mode	52
	Changing the Drive Mode	54
	Getting Familiar with the Built-in Flash	57
	Using flash in the fully automatic modes	58
	Enabling flash in advanced exposure modes	60
	Using Red-Eye Reduction flash	60
	Controlling Picture Quality	61
	Diagnosing quality problems	62
	Decoding the Image Quality options	64
	Considering Resolution: Large, Medium, or Small?	66
	Understanding File Type (JPEG or Raw)	69
	JPEG: The imaging (and web) standard	69
	Raw (CR2): The purist's choice	71
	Our take: Choose Fine or Raw	73
	Setting the Photo Aspect Ratio	73
CHAPTER 3:	Taking Great Pictures, Automatically	75
	As Easy As It Gets: Auto and Flash Off	76
	Taking Advantage of Scene (SCN) Modes	79
	Modifying scene mode results	88
	Gaining More Control with Creative Auto	94
CHAPTER 4:	Exploring Live View Shooting and Movie Making	99
	Getting Started	100
	Reviewing Live View and Movie mode cautions	102
	Customizing the display	103
	Focusing in Live View and Movie Modes	107
	Continuous autofocus in Movie mode	107
	Choosing an AF (autofocus) mode	109
	Manual focusing	114
	Zooming in for a focus check	115
	Exploring Other Live View Options	116
	Adjusting other Live View picture settings	116
	Using the touch shutter	122
	Recording Your First Movie	123
	Customizing Movie Recording Settings	126
	Shooting Menu 4 (Movie)	128
	Shooting Menu 5 (Movie)	129
	Using Movie Digital Zoom	134
	Playing Movies	136

PART 2: WORKING WITH PICTURE FILES 139

CHAPTER 5: **Picture Playback** 141

Disabling and Adjusting Image Review.	141
Exploring Playback Mode.	142
Switching to Index (thumbnails) view.	143
Using the Quick Control screen during playback.	145
Jumping through images.	146
Rotating pictures.	149
Zooming in for a closer view.	150
Viewing Picture Data.	151
Basic Information display data.	152
Shooting Information display mode.	153
Understanding histograms.	157
Enabling a few display extras.	159
Deleting Photos.	159
Erasing single images.	159
Erasing all images on the memory card.	160
Erasing selected images.	160
Protecting Photos.	162
Protecting (or unprotecting) a single photo.	162
Protecting multiple photos.	163
Rating Photos.	165
Viewing Your Photos on a Television.	167

CHAPTER 6: **Downloading, Printing, and Sharing Your Photos** 169

Installing the Canon Software.	170
Sending Pictures to the Computer.	171
Connecting camera and computer via USB.	172
Connecting to the computer via Wi-Fi.	173
Downloading from the camera.	176
Downloading from a card reader.	178
Processing Raw (CR2) Files.	178
Processing Raw images in the camera.	179
Converting Raw images in Digital Photo Professional.	182
Planning for Perfect Prints.	185
Preparing Pictures for Online Sharing.	186

PART 3: TAKING CREATIVE CONTROL	189
CHAPTER 7: Getting Creative with Exposure	191
Kicking Your Camera into High Gear	192
Introducing Exposure Basics: Aperture, Shutter Speed, and ISO	193
Understanding exposure-setting side effects	195
Doing the exposure balancing act	199
Monitoring Exposure Settings	200
Choosing an Exposure Metering Mode	203
Setting ISO, f-stop, and Shutter Speed	206
Controlling ISO	206
Adjusting aperture and shutter speed	209
Sorting through Your Camera's Exposure-Correction Tools	212
Overriding autoexposure results with Exposure Compensation	212
Improving high-contrast shots	216
Experimenting with Auto Lighting Optimizer	221
Correcting vignetting with Peripheral Illumination Correction	223
Dampening noise	225
Locking Autoexposure Settings	227
Bracketing Exposures Automatically	229
Setting up for automatic bracketing	230
Shooting a bracketed series	232
Using Flash in Advanced Exposure Modes	233
Understanding your camera's approach to flash	234
Using flash outdoors	237
Adjusting flash power with Flash Exposure Compensation	238
Locking the flash exposure	240
Exploring more flash options	242
CHAPTER 8: Manipulating Focus and Color	245
Reviewing Focus Basics	246
Introducing the AF-ON button	247
Adjusting Autofocus Performance	248
AF Area mode: One focus point or many?	249
Changing the AF (autofocus) operation mode	252
Choosing the right autofocus combo	254
Manipulating Depth of Field	254
Controlling Color	259
Correcting colors with white balance	259
Changing the White Balance setting	261
Creating a custom White Balance setting	263
Fine-tuning White Balance settings	265
Bracketing shots with white balance	269
Taking a Quick Look at Picture Styles	273

CHAPTER 9:	Putting It All Together	279
	Recapping Basic Picture Settings	279
	Setting Up for Specific Scenes	282
	Shooting still portraits	282
	Capturing action	287
	Capturing scenic vistas	291
	Capturing dynamic close-ups	293
PART 4:	THE PART OF TENS	297
CHAPTER 10:	Ten Features to Explore on a Rainy Day	299
	Enabling Mirror Lockup Shooting	300
	Adding Cleaning Instructions to Images	300
	Tagging Files with Your Copyright Claim	301
	Exploring Wi-Fi Functions	302
	Experimenting with Creative Filters	304
	Shooting in Multiple Exposure Mode	307
	Investigating Two More Printing Options	308
	Presenting a Slide Show	309
	Editing Movies	309
	Creating Video Snapshots and Time Lapse Movies	310
CHAPTER 11:	Ten More Ways to Customize Your Camera	313
	Creating Your Own Exposure Modes	314
	Creating Your Very Own Camera Menu	315
	Creating Custom Folders	318
	Changing the Color Space from sRGB to Adobe RGB	318
	Changing the Direction of the Dials	319
	Changing All the Furniture Around	319
	Disabling the AF-Assist Beam	321
	Controlling the Lens Focus Drive	322
	Making the Flashing Red AF Points Go Away	323
	Considering a Few Other Autofocusing Tweaks	323
INDEX		327

Introduction

In 2003, Canon revolutionized the photography world by introducing the first digital SLR camera (dSLR) to sell for less than \$1,000, the EOS Digital Rebel/300D. And even at that then-unheard-of price, the camera delivered exceptional performance and picture quality, earning it rave reviews and multiple industry awards. No wonder it quickly became a best seller.

That tradition of excellence and value lives on in the EOS 80D. Like its ancestors, this baby offers the range of advanced controls that experienced photographers demand plus an assortment of tools designed to help beginners be successful as well. Adding to the fun, this camera also offers the option to record full high-definition video, plus an articulating, touchscreen monitor that's not only useful but also just plain cool.

The 80D is so feature-packed, in fact, that sorting out everything can be a challenge, especially if you're new to digital photography or SLR photography, or both. For starters, you may not even be sure what SLR means, let alone have a clue about all the other terms you encounter in your camera manual — resolution, aperture, and ISO, for example. And if you're like many people, you may be so overwhelmed by all the controls on your camera that you haven't yet ventured beyond fully automatic picture-taking mode. That's a shame because it's sort of like buying a Porsche Turbo and never pushing it past 50 miles per hour.

Therein lies the point of *Canon EOS 80D For Dummies*. In this book, you can discover not only what each bell and whistle on your camera does but also when, where, why, and how to put it to best use. Unlike many photography books, this one doesn't require any previous knowledge of photography or digital imaging to make sense of concepts, either. In classic *For Dummies* style, everything is explained in easy-to-understand language, with lots of illustrations to help clear up any confusion.

In short, what you have in your hands is the paperback version of an in-depth photography workshop tailored specifically to your Canon picture-taking powerhouse. Whether your interests lie in taking family photos, exploring nature and travel photography, or snapping product shots for your business, you'll get the information you need to capture the images you envision.

A Quick Look at What's Ahead

This book is organized into four parts, each devoted to a different aspect of using your camera. Although chapters flow in a sequence that's designed to take you from absolute beginner to experienced user, we also tried to make each chapter as self-standing as possible so that you can explore topics that interest you in any order you please.

Here's a quick look at what you can find in each part:

- » **Part 1: Fast Track to Super Snaps:** This part contains four chapters that help you get up and running. Chapter 1 offers a brief overview of camera controls and walks you through initial setup and customization steps. Chapter 2 explains basic picture-taking options, such as shutter-release mode and image quality settings, and Chapter 3 shows you how to use the camera's simplest exposure modes, including Scene Intelligent Auto, Creative Auto, and SCN (Scene) modes. Chapter 4 explains the ins and outs of using Live View, the feature that lets you compose pictures on the monitor, and also covers movie recording.
- » **Part 2: Working with Picture Files:** As its title implies, this part discusses after-the-shot topics. Chapter 5 explains picture playback features, and Chapter 6 guides you through the process of transferring pictures from your camera to your computer and then getting pictures ready for print and online sharing. You can also get help with converting pictures shot in the Canon Raw file format (CR2) to a standard format in Chapter 6.
- » **Part 3: Taking Creative Control:** Chapters in this part help you unleash the full creative power of your camera by moving into semi-automatic or manual photography modes. Chapter 7 covers the all-important topic of exposure; Chapter 8 offers tips for manipulating focus and color; and Chapter 9 provides a quick-reference guide to shooting strategies for specific types of pictures: portraits, action shots, landscape scenes, and close-ups.
- » **Part 4: The Part of Tens:** In famous *For Dummies* tradition, the book concludes with two top-ten lists containing additional bits of information. Chapter 10 takes a look at ten features that although not found on most "Top Ten Reasons I Bought My 80D" lists, are nonetheless interesting, useful on occasion, or a bit of both. Chapter 11 closes things out with ten ways to customize your camera not covered in earlier chapters.

Icons and Other Stuff to Note

If this isn't your first *For Dummies* book, you may be familiar with the large round icons that decorate its margins. If not, here's your very own icon-decoder ring:



TIP



WARNING



TECHNICAL
STUFF



REMEMBER

- » A Tip icon flags information that saves you time, effort, money, or another valuable resource, including your sanity.
- » When you see this icon, look alive. It indicates a potential danger zone that can result in much wailing and teeth-gnashing if it's ignored.
- » Lots of information in this book is of a technical nature — digital photography is a technical animal, after all. But if we present a detail that's useful mainly for impressing your geeky friends, we mark it with this icon.
- » This icon highlights information that's especially worth storing in your brain's long-term memory or to remind you of a fact that may have been displaced from that memory by another pressing fact.

Additionally, we need to point out a few other details that will help you use this book:

- » **Other margin art:** Replicas of some of your camera's buttons and onscreen graphics also appear in the margins of some paragraphs and in some tables. We include these images to provide quick reminders of the appearance of the button or option being discussed.
- » **Software menu commands:** In sections that cover software, a series of words connected by an arrow indicates commands you choose from the program menus. For example, if a step tells you, "Choose File→Export," click the File menu to unfurl it and then click the Export command on the menu.

eCheat Sheet

To get this Cheat Sheet, simply go to www.dummies.com and search for "Canon EOS 80D For Dummies Cheat Sheet" in the Search box. The Cheat Sheet contains a quick-reference guide to all the buttons, dials, switches, and exposure modes on your camera. Log on, print it out, and tuck it in your camera bag for times when you don't want to carry this book with you.

Practice, Be Patient, and Have Fun!

To wrap up this preamble, we want to stress that if you initially think that digital photography is too confusing or too technical for you, you're in very good company. *Everyone* finds this stuff a little mind-boggling at first. Take it slowly, experimenting with just one or two new camera settings or techniques at first. Then, every time you go on a photo outing, make it a point to add one or two more shooting skills to your repertoire. With some time, patience, and practice, you'll soon wield your camera like a pro, dialing in the necessary settings to capture your creative vision almost instinctively.

So without further ado, we invite you to grab your camera and a cup of whatever it is you prefer to sip while you read and then start exploring the rest of this book. Your EOS 80D is the perfect partner for your photographic journey, and we thank you for allowing us, in this book, to serve as your tour guides.

1

Fast Track to Super Snaps

IN THIS PART . . .

Get familiar with your camera's buttons, displays, and menus.

Read about basic photo-taking settings and when to use each.

Take great pictures easily by using the fully automatic shooting modes.

Investigate Live View and movie recording.

IN THIS CHAPTER

Using an SLR lens

Adjusting the viewfinder and monitor

Practicing touchscreen gestures

Working with camera memory cards

Getting acquainted with external camera controls

Checking and changing camera settings

Customizing basic camera operations

Chapter 1

Getting the Lay of the Land

If you're like us, shooting for the first time with a camera as sophisticated as the Canon EOS 80D produces a blend of excitement and anxiety. On one hand, you can't wait to start using your new equipment, but on the other, you're a little intimidated by all its buttons, dials, and menu options.

Well, fear not: This chapter provides the information you need to start getting comfortable with your 80D. Along with an introduction to the camera's external controls, we offer details about working with lenses and memory cards, viewing and adjusting camera settings, and choosing basic setup options.

Looking at Lenses

One of the biggest differences between a point-and-shoot camera and a dSLR (*digital single lens reflex*) camera is the lens. With a dSLR, you can change lenses to suit different photographic needs, going from an extreme close-up lens to a

super-long telephoto, for example. In addition, a dSLR lens has a focusing ring that gives you the option of focusing manually instead of relying on the camera's autofocus mechanism.

We don't have room in this book to go into detail about the science of lenses, nor do we think that an in-depth knowledge of the subject is terribly important to your photographic success. But the next few sections offer advice that may help when you're shopping for lenses, figuring out whether the lenses you inherited from Uncle Ted or found on eBay will work with your 80D, and taking the steps involved in actually mounting and using a lens.

Choosing a lens

To decide which lens is the best partner for your camera, start by considering these factors:



TECHNICAL
STUFF

» **Lens compatibility:** Your camera accepts two categories of Canon lenses: those with an EF-S design and those with a plain old EF design.

The EF stands for *electro focus*; the S stands for *short back focus*. And *that* simply means the rear element of the lens is closer to the sensor than with an EF lens. And no, you don't need to remember what the abbreviation stands for. Just make sure if you buy a Canon lens other than one of the two sold as a bundle with the camera, that it carries either the EF or EF-S specification. If you want to buy a non-Canon lens, check the lens manufacturer's website to find out which lenses work with your camera.

Two other lens acronyms to note: First, the 18–55mm and 18–135mm lenses that you can buy as part of a 80D kit are *IS* lenses, which means that they offer *image stabilization*, a feature you can explore a few sections from here.

Second, they also carry another designation: *STM* (for the 18-55mm lens) or *USM* (on the 18-135mm lens). The STM abbreviation refers to the fact that the autofocus system uses *stepping motor technology*, which is designed to provide smoother, quieter autofocus. USM stands for *UltraSonic Motor*, which offers fast, professional-grade autofocus.



WARNING

Finally, be aware that, unlike both of the kit lenses available with the 80D, some lenses can't take full advantage of the Dual Pixel CMOS (*see-moss*) autofocus system that's used during Live View and Movie recording. Don't worry about what the name means — the important point is that it produces faster, more accurate autofocus. If you're interested in learning more, go to the 80D product page at the Canon USA website (www.usa.canon.com), which has a link to a section that explains the technology and lists lenses that support it.

» **Focal length and the crop factor:** The focal length of a lens, stated in millimeters, determines the angle of view that the camera can capture and the

spatial relationship of objects in the frame. Focal length also affects *depth of field*, or the distance over which focus appears acceptably sharp.

You can loosely categorize lenses by focal length as follows:

- **Wide-angle:** Lenses with short focal lengths — generally, anything under 35mm — are known as *wide-angle lenses*. A wide-angle lens has the visual effect of pushing the subject away from you and making it appear smaller. As a result, you can fit more of the scene into the frame without moving back. Additionally, a wide-angle lens has a large depth of field, which means that both the subject and background objects appear sharp. These characteristics make wide-angle lenses ideal for landscape photography.
- **Telephoto:** Lenses with focal lengths longer than about 70mm are *telephoto lenses*. These lenses create the illusion of bringing the subject closer to you, increase the subject's size in the frame, and produce a short depth of field so that the subject is sharply focused but distant objects are blurry. Telephoto lenses are great for capturing wildlife and other subjects that don't permit up-close shooting.
- **Normal:** A focal length in the neighborhood of 35mm to 70mm is considered “normal” — that is, somewhere between a wide-angle and telephoto. This focal length produces the angle of view and depth of field that are appropriate for the kinds of snapshots that most people take.

Figure 1-1 offers an illustration of the difference that focal length makes, showing the same scene captured at 42mm (left image) and 112mm (right image). Of course, the illustration shows just two of countless possibilities, and the question of which focal length best captures a scene depends on your creative goals.

FIGURE 1-1: Julie used a focal length of 42mm to capture the first image and then zoomed to a focal length of 112mm to capture the second one.

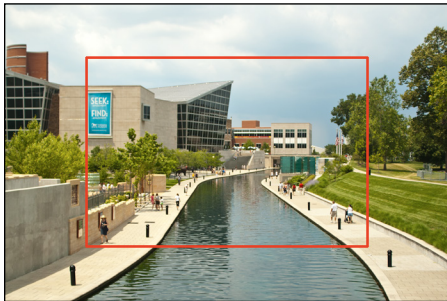




Note, however, that the focal lengths stated in this book are so-called *35mm equivalent* focal lengths. Here's the deal: When you put a standard lens on most dSLR cameras, including your 80D, the available frame area is reduced, as if you took a picture on a camera that uses 35mm film negatives and then cropped it.

This so-called *crop factor* varies depending on the camera, which is why the photo industry adopted the 35mm-equivalent measuring stick as a standard. With the 80D, the crop factor is roughly 1.6. So the 18–55mm kit lens, for example, captures the approximate area you would get from a 29–88mm lens on a 35mm film camera. (Multiply the crop factor by the lens focal length to get the actual angle of view.) In Figure 1-2, the red line indicates the image frame area that results from the 1.6 crop factor.

FIGURE 1-2:
The 1.6
crop factor
produces the
angle of view
indicated by
the red outline.



When shopping for a lens, remember this crop factor to make sure that you get the focal length designed for the type of pictures you want to take.

» **Prime versus zoom lenses:** A *prime* lens is a single focal-length lens. With a zoom lens, you get a range of focal lengths in one unit. For example, the kit lens we feature in this book has a focal-length range of 18–55mm.

Why select a lens that offers a single focal length when a zoom lens offers a range of focal lengths? In a word, quality. Because of some lens science we won't bore you with, you typically see some reduction in picture quality at certain points in the range of a zoom lens. On the flip side, a zoom lens is more convenient than carting around a bag of prime lenses, and many zoom lenses today offer very good image quality.

» **Aperture range:** The *aperture* is an adjustable diaphragm in a lens. By adjusting the aperture size, you can control the amount of light that enters through the lens and strikes the image sensor, thereby controlling exposure. The aperture setting also affects depth of field: A wide-open aperture produces a short depth of field, so the subject is sharply focused but distant objects appear blurry; a narrow aperture produces a long depth of field so that both the subject and distant objects appear sharp.

Chapters 7 and 8 cover these issues in detail. For the purposes of lens shopping, you need to know just a few things.

- *Every lens has a specific range of aperture settings.* Obviously, the larger that range, the more control you have over exposure and depth of field.
- *The larger the maximum aperture, the “faster” the lens.* Aperture settings are stated in *f-stops*, with a lower number meaning a larger aperture. For example, a setting of *f/2* results in a more open aperture than *f/4*. And if you have one lens with a maximum aperture of *f/2* and another with a maximum aperture of *f/4*, the *f/2* lens is said to be *faster* because you can open the aperture wider, thereby allowing more light into the camera and permitting the image to be captured in less time. This not only benefits you in low-light situations but also when photographing action, which requires a fast shutter speed (short exposure time). So, all other things being equal, a faster lens is better.
- *With some zoom lenses, the maximum and minimum aperture change as you zoom the lens.* For example, when you zoom to a telephoto focal length, you usually can’t open the aperture as much as you can at a wide-angle setting. You can buy lenses that maintain the same maximum and minimum aperture throughout the whole zoom lens, but you pay more for this feature.

After studying these issues and narrowing down your choices, finding the right lens in the category you want is just a matter of doing some homework. Study lens reviews in photography magazines and online photography sites to find the best performing lens in your price range.

Attaching and removing a lens

Whatever lens you choose, follow these steps to attach it to the camera body:

- 1. Turn the camera off and remove the cap that covers the lens mount on the front of the camera.**
- 2. Remove the cap that covers the back of the lens.**
- 3. Locate the proper lens mounting index on the camera body.**

A *mounting index* is a mark that tells you where to align the lens with the camera body when connecting the two. Your camera has two of these marks, one red and one white, as shown in Figure 1-3.

Which marker you use to align your lens depends on the lens type:

- *Canon EF-S lens:* The white square is the mounting index.
- *Canon EF lens:* The red dot is the mounting index.

With a non-Canon lens, check the lens manual for help with this step.

4. Align the mounting index on the lens with the one on the camera.

The lens also has a mounting index. Figure 1-3 shows the one that appears on the 18–55mm EF-S kit lens.

5. Keeping the mounting indexes aligned, position the lens on the camera's lens mount.

6. Turn the lens clockwise until it clicks into place.

In other words, turn the lens toward the lens-release button, labeled in Figure 1-3.

To remove a lens, turn the camera off, press the lens-release button, grip the rear collar of the lens, and turn the lens toward the shutter button side of the camera. When you feel the lens release from the mount, lift the lens off the camera. Place the rear protective cap onto the back of the lens, and if you aren't putting another lens on the camera, cover the lens mount with its protective cap, too.

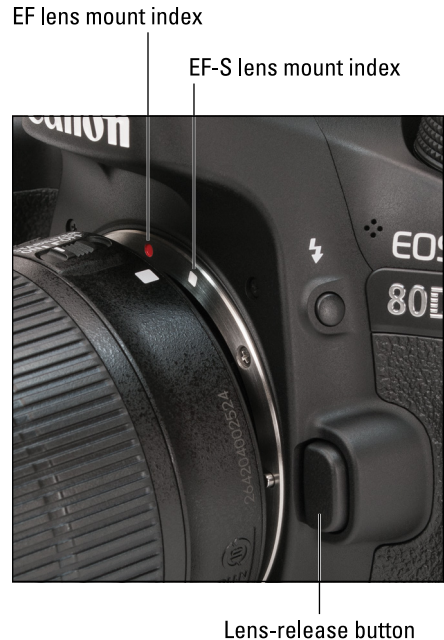


FIGURE 1-3: Place the lens in the lens mount with the mounting indexes aligned.



WARNING

Always switch lenses in a clean environment to reduce the risk of getting dust and dirt inside the camera or lens. For added safety, point the camera slightly down when performing this maneuver to help prevent flotsam in the air from being drawn into the camera by gravity.

Zooming in and out

If you bought a zoom lens, it sports a *zoom ring*. Figure 1-4 shows you the location of the zoom ring on the 18–55mm kit lens; for other lenses, see your lens user guide. With the kit lens, rotate the zoom ring to zoom in and out. A few zoom lenses use a push-pull motion to zoom instead.

The numbers around the edge of the zoom ring, by the way, represent focal lengths. The number that's aligned with the white focal-length indicator, labeled in Figure 1-4, represents the current focal length.

Some lenses, including the alternate 18–135mm kit lens, also have a zoom ring lock switch. When the lens is set to the 18mm position, you can use the switch to

lock the lens at that focal length. That way, when the camera is pointing downward, gravity can't cause the lens to extend to a longer focal length (a problem known as *lens creep*).



FIGURE 1-4:
Here's a look at
the 18-55mm
kit lens.

Using an IS (image stabilizer) lens

Both kit lenses sold with the 80D offer *image stabilization*, indicated by the initials *IS* in the lens name. Image stabilization attempts to compensate for small amounts of camera shake that are common when photographers handhold their cameras and use a slow shutter speed, a lens with a long focal length, or both. Camera shake can result in blurry images, even when your focus is dead-on. Although image stabilization can't work miracles, it enables most people to capture sharp handheld shots in many situations that they otherwise couldn't. The feature works regardless of whether you use autofocus or manual focusing, and it works for both still photography and movie shooting.



WARNING

However, when you use a tripod, the system may try to adjust for movement that isn't actually occurring. Although this problem shouldn't be an issue with most Canon IS lenses, if you do see blurry images while using a tripod, try setting the Image Stabilizer (IS) switch (shown in Figure 1-4) to Off. You also can save battery power by turning off image stabilization when you use a tripod. If you use a

monopod, leave image stabilization turned on so it can help compensate for any accidental movement of the monopod. If you shoot in the B (Bulb) mode, Canon recommends that you disable stabilization.

On non-Canon lenses, image stabilization may go by another name: *anti-shake*, *vibration compensation*, and so on. In some cases, the manufacturers recommend that you leave the system turned on or select a special setting when you use a tripod, so check the lens manual for information.



REMEMBER

Whatever lens you use, image stabilization isn't meant to eliminate the blur that can occur when your subject moves during the exposure. That problem is related to shutter speed, a topic you can explore in Chapter 7.

Getting acquainted with focusing

Your camera offers an excellent autofocus system. With some subjects, however, autofocus can be slow or impossible, which is why your camera also offers manual focusing. Chapter 8 fully explains automatic and manual focusing for viewfinder photography, and Chapter 4 explains how things work when you're using the monitor to compose images (Live View mode) or are shooting movies. But here's a primer to get you started:



WARNING

- » **Choosing the focusing method:** You set the focusing method via the AF/MF (autofocus/manual focus) switch on the lens. But be careful: If you're in Live View or Movie mode, exit the live preview and return to viewfinder shooting before moving the lens switch from the AF to MF position. This step is needed to avoid damage that can occur if you switch to manual focusing while the continuous autofocus system that's available for Movie and Live View modes engaged. (Chapter 4 explains this system and everything else about Live View and movie shooting.)
- » **Setting focus in MF mode:** Just rotate the lens focusing ring. Figure 1-4 shows you where to find it on the 18–55mm kit lens.
- » **Setting focus in AF mode:** Press the shutter button halfway to initiate autofocus. After the scene comes into focus, press the button the rest of the way to take the picture. A couple pointers to remember:
 - How the camera finds its focusing target and when it locks focus depend on autofocus settings that we detail in Chapters 4 and 8.
 - If you're using the 18–55mm kit lens (or any STM lens from Canon), turning the focus ring when in autofocus mode has no effect on the lens — it turns but does not focus and will never hit a physical stop. Both the 18–55mm and 18–135mm USM lens offer full-time manual focus when using

one-shot AF. Simply press and hold the shutter button halfway, and then turn the focusing ring.

- » **Waking up a sleeping lens:** With both kit lenses (as well as some other STM lenses), the focusing motor doesn't operate if the camera has gone to sleep because of the Auto Power Off feature, which we explain in the section "Setup Menu 2," later in this chapter. The lens itself goes to sleep if you don't perform any lens operations for a while. Either way, manual focus adjustments aren't possible when the lens is in this state, and automatic focusing during zooming may be delayed. You can wake the camera and lens up by pressing the shutter button halfway.



TIP

Two final Focusing 101 tips:

- » If you have trouble focusing, you may be too close to your subject; every lens has a minimum focusing distance.
- » In order to properly assess focus, you need to adjust the viewfinder to accommodate your eyesight, as outlined next.

Adjusting the Viewfinder

Near the upper right of the rubber eyepiece that surrounds the viewfinder is a dial (see Figure 1-5) that enables you to adjust the viewfinder focus to match your eyesight. The dial is officially known as the *diopter adjustment control*.



WARNING

If you don't take this step, scenes that appear out of focus through the viewfinder may actually be sharply focused through the lens, and vice versa. Here's how to make the necessary adjustment:

1. **Remove the lens cap, look through the viewfinder, and press the shutter button halfway to display picture data at the bottom of the viewfinder.**

In Scene Intelligent Auto mode (represented by the green A+ on the camera's Mode dial), Creative Auto (CA), as well as in some of the SCN (Scene) and

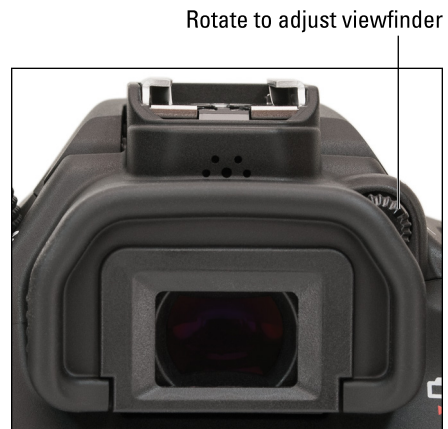


FIGURE 1-5: Rotate this dial to adjust the viewfinder focus to your eyesight.

Creative Filter modes, the built-in flash may pop up; ignore it for now and close the unit after you finish adjusting the viewfinder.

2. Rotate the diopter adjustment dial until the data appears sharpest.



TIP

If your eyesight is such that you can't get the display to appear sharp by using the diopter adjustment knob, you can buy an additional eyepiece adapter. Prices range from about \$15–\$30 depending on the magnification you need. Look for an E-series dioptic adjustment lens adapter.

Adjusting the Monitor Position

One of the many cool features of the 80D is its articulating monitor. When you first take the camera out of its box, the monitor is positioned with the screen facing the back of the body, as shown on the left in Figure 1-6, protecting the screen from scratches and smudges. (It's a good idea to place the monitor in this position when you're not using the camera.) When you're ready to start shooting or reviewing your photos, you can place the monitor in the traditional position on the camera back, as shown on the right in Figure 1-6. Or for more flexibility, you can swing the monitor out and away from the camera body and then rotate it to find the best viewing angle, as shown in Figure 1-7.

FIGURE 1-6: Here you see two possible monitor positions.



Because playing with the monitor is no doubt one of the first things you did after unpacking your camera, we won't waste space walking you through the process of adjusting the screen. (If you need help, the camera manual shows you what to do.) But we want to offer a few monitor-related tips:

» **Don't force things.** The monitor twists only in certain directions, and it's easy to forget which way it's supposed to move. So if you feel resistance, don't

force things; instead, rely on that feeling of resistance to remind you to turn the screen the other way.

- » **Watch the crunch factor.** Before positioning the monitor back into the camera, use a lens brush or soft cloth to clean the monitor housing so there's nothing in the way that could damage the screen.
- » **Clean smart.** To clean the screen, use only the special cloths and cleaning solutions made for this purpose. *Do not* use paper products such as paper towels because they can contain wood fibers that can scratch the monitor. And never use a can of compressed air to blow dust off the camera — the air is cold and can crack the monitor.

FIGURE 1-7:
You also can
unlock the
monitor from
the body and
then rotate the
screen to get
the best view
of things.



Using the Touchscreen

Just as cool as the monitor's flexibility is its touchscreen interface. You can choose menu options, change picture settings, and scroll through your pictures by touching one or two fingers to the screen, just as you can with a tablet, smartphone, or other touchscreen device.

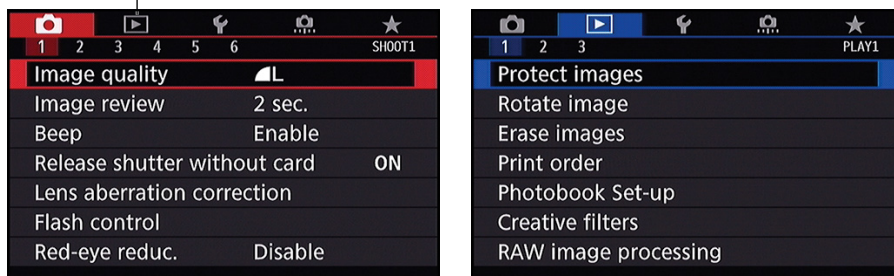
Throughout the book, we tell you exactly where and how to touch the screen to accomplish specific actions. For now, get acquainted with the terminology used to indicate these touchscreen moves, called *gestures* by those who feel the need to assign names to things such as this.

- » **Tap:** Tap your finger on a screen item to select it. Give it a try: First, press the Menu button to display the menu screen on the monitor, as shown on the left in Figure 1-8. Along the top of the screen, you see one highlighted icon, representing the current menu, and a row of dimmed icons representing other

menu categories. On the left side of Figure 1-8, Shooting Menu 1 is the current menu. To switch to another menu, tap its icon. For example, tap the icon for the Playback menu, labeled on the left in the figure, and that menu appears, as shown on the right. Beneath the top row of icons are numbered menus (also called secondary tabs or submenus), which allow options to be grouped under their main tab. Tap a number to switch to that numbered menu.

Tap to select Playback menus

FIGURE 1-8:
Tap a menu
icon to display
its menu.



WARNING

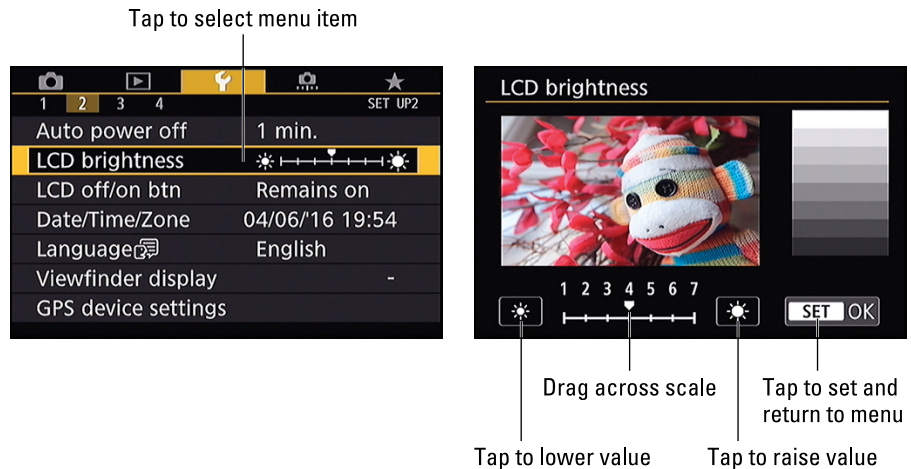
Tap *gently* — you don't have to use force. To avoid damaging the screen, use the fleshy part of your fingertip, not the nail or any other sharp object, and be sure that your fingers are dry because the screen may not respond if it gets wet. Canon also advises against putting a protective cover over the monitor; doing so can reduce the monitor's responsiveness to your touch.

- » **Drag:** Drag your finger up, down, right, or left across the screen, according to our instruction. To try this gesture, first display Setup Menu 2 and tap LCD Brightness, shown on the left in Figure 1-9, to display the screen shown on the right. Now drag your finger across the scale at the bottom of the screen to adjust the screen brightness. Reset the marker to the middle of the bar after you're done playing around — that setting gives you the most accurate indication of picture brightness.

On this particular screen, you also see icons at either end of the scale. You can tap those icons to raise or lower the value represented on the scale. Either way, tap the Set icon to implement the setting and return to the menu.

- » **Swipe:** Drag a finger quickly across the screen. You use this gesture, known in some circles as a *flick*, to scroll through your pictures in Playback mode, a topic you can explore in Chapter 5.
- » **Pinch in/pinch out:** To pinch in, place your thumb at one edge of the screen and your pointer finger at the other. Then drag both toward the center of the screen. To pinch out, start in the center of the screen and swipe both fingers outward. Pinching is how you zoom in and out on pictures during playback; again, Chapter 5 provides details.

FIGURE 1-9: Tap the LCD Brightness item (left) and then drag left or right across a scale to adjust the setting (right).



You can control two aspects of touchscreen behavior:

» **Touchscreen response:** You can choose from three settings, accessed via the Touch Control option, found on Setup Menu 3 and shown in Figure 1-10.

- *Standard:* This setting is the default. The touchscreen is enabled and is set to respond to a “normal” amount of pressure. (Don’t ask us how the Powers That Be decided what that pressure level is — we don’t get invited to those conferences.)
- *Sensitive:* This setting makes the touchscreen more, er, touchy. That is, it responds to lighter pressure. Oddly, though, Canon says that the camera may be slower to respond to a very quick tap at this setting. Your mileage may vary.
- *Disable:* Select this setting to disable the touchscreen function.

To restore the touch function, press the Menu button to bring up the menu screens and then rotate the Main dial — that’s the one just behind the shutter button — to select Setup Menu 3. Then rotate the Quick Control dial (the big wheel on the back of the camera) to highlight Touch Control. Press the Set button, rotate the Quick Control dial to highlight Standard or Sensitive, and press the Set button again.



FIGURE 1-10: Control the touchscreen response through this menu item.

» **Touchscreen sound effects:** By default, the camera emits a little “boop” sound every time you tap a touch-controlled setting. If you’re sick of hearing it, visit Shooting Menu 1 and look for the Beep setting, shown in Figure 1-11. The option that disables the boop is Touch to Silence — *silence* being indicated by a little speaker with a slash through it. The Disable setting turns off both the touchscreen sound and the normal beep tone that occurs when the camera finds its focus point.

FIGURE 1-11: Set the Beep option to Touch to Silence to prevent the camera from making a sound when you tap a touch-controlled item.



One final point about the touchscreen: If you connect the camera to a TV or monitor, the touchscreen has limited functionality when you are playing back photos and movies (scrolling and zooming). Otherwise, it is no longer available, regardless of the Touch Control option. Don’t fret; you just have to use the old-fashioned button-push method of selecting menu options. See “Ordering from Camera Menus,” later in this chapter, if you need help.

Working with Memory Cards

Instead of recording images on film, digital cameras store pictures on *memory cards*. Your camera uses a specific type of memory card — an *SD card* (for *Secure Digital*), shown in Figures 1-12 and 1-13.



TIP

Most SD cards carry the designation SDHC (for *High Capacity*) or SDXC (for *eXtended Capacity*), depending on how many gigabytes (GB) of data they hold. SDHC cards hold from 4GB to 32GB of data; the SDXC moniker indicates a capacity greater than 32GB. Cards are also assigned a speed rating from 2 to 10, with a higher number indicating a faster data-transfer rate. The memory-card industry added a new category of speed rating — Ultra High Speed (UHS). UHS cards are organized into two bus interface classes (I and II) that support different bus speeds and two speed classes (U1 and U3) which have different data writing speeds. The 80D is